

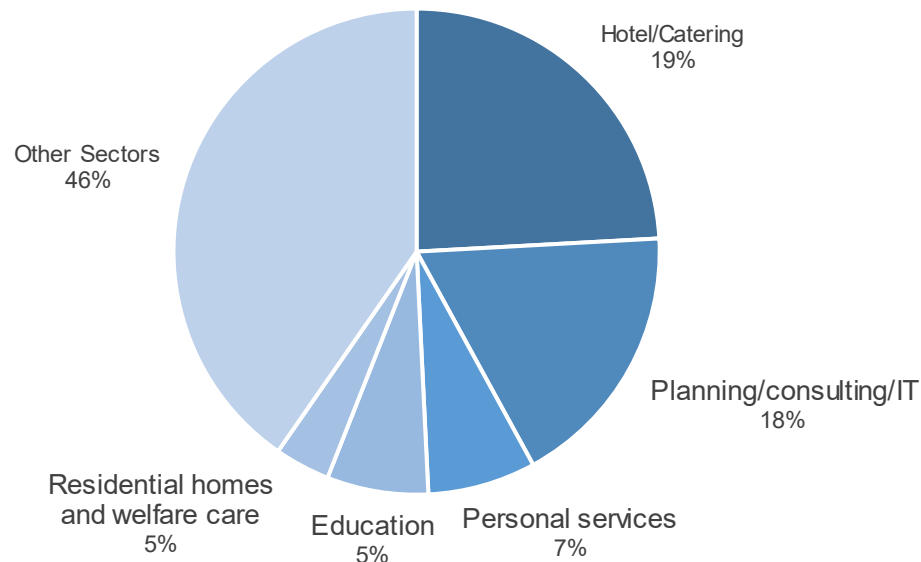


Weekly statistics:

## Persons with Protection Status 'S' in employment<sup>1</sup>

	Week 36	Week 37	Diff.
Persons with Protection Status 'S'	69904	70131	+0.3%
Persons in gainful employment	16052	16181	+0.8%
Percentage of persons in employment <sup>2</sup>	22.96%	23.07%	+0.5%
Working-age population (18-64)	43239	43396	+0.4%
Persons in employment (18-64)	15282	15405	+0.8%
Percentage of working-age population in employment	35.34%	35.50%	+0.4%

Figure 1: Persons with Protection Status 'S' in gainful employment – key sectors<sup>3</sup>



Source: ZEMIS database – status on 16.09.2025<sup>4</sup>

The above analysis is based on the entries made by the competent cantonal authorities in the ZEMIS database. A person can only apply for a work permit after they receive a letter from SEM confirming their S protection status. The cantonal authorities only record a work permit in the database after they have issued an S permit. This means that the actual number of work permits issued is higher than the

<sup>1</sup> A more accurate methodology has been used since February 2025. This may result in slight variations compared to the previous figures.

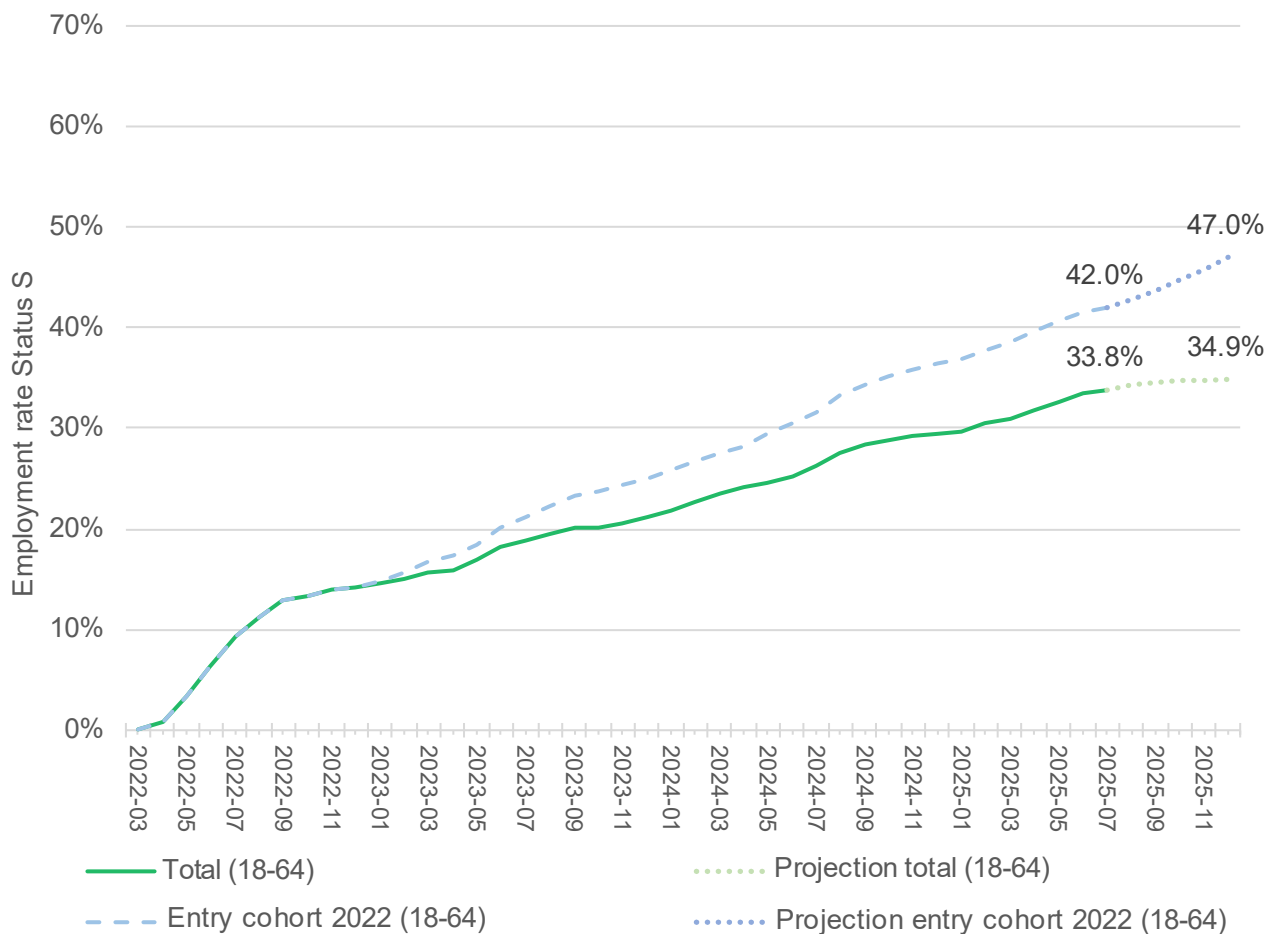
<sup>2</sup> This percentage does not indicate the rate of employment, but merely the proportion of persons with Protection Status 'S' who were in gainful employment on the date of reporting (all ages).

<sup>3</sup> Only the proportionally first five sectors are shown.

<sup>4</sup> These are daily figures, which may deviate slightly from the historicised data at the end of the month.

figures shown here.

Figure 2: Development of the employment rate (18-64) and forecast until the end of 2025<sup>5</sup>



Source: Asylum statistics (as of July 31, 2025) (Statistical Service)

On May 28, 2025, the Federal Council set a target of 50 percent employment for persons with S protection status who have been living in Switzerland for at least three years by the end of 2025. A time series forecast model can be used to calculate the employment rate at the end of 2025. The employment rate among those seeking protection who have been in Switzerland since 2022 is comparatively higher than in the overall population of people seeking protection. The group of people who have been in Switzerland for over two years accounts for a good two-thirds (70%) of the total population.

<sup>5</sup> The forecasts are based on a model of the time series of monthly employment rate assessments since March 2022 and are updated once a month.